

Hitachi Ion Milling System
E-3500

Hitachi High-Technologies

Mirror finished Cross-Section of various samples can be obtained.

Hitachi Ion Milling System
E-3500



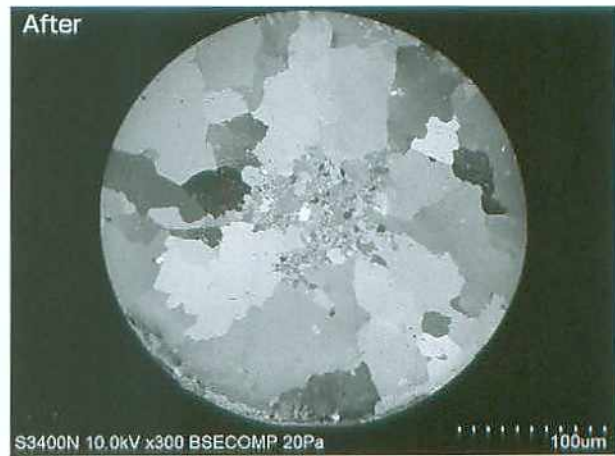
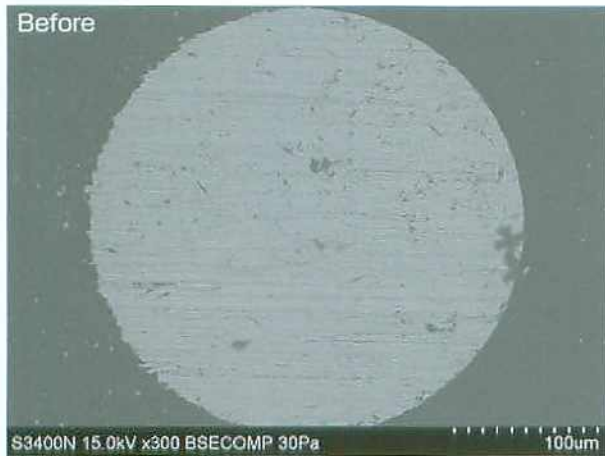
Feature

The ion beam which is parallel to the shielding plate ensure smooth Cross-Sectioning.

Small flaws and distortions caused by mechanical cutting and polishing can be reduced or removed.

Detachable specimen stage for ease of specimen setting.

HITACHI

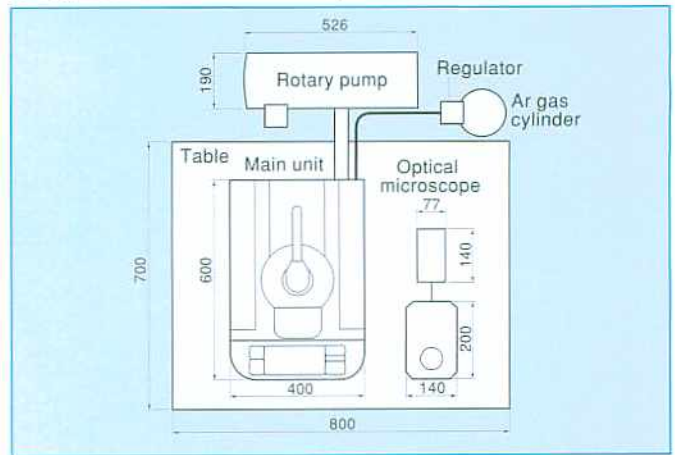


Specifications

Item	Description
Gas	Argon gas
Accelerating voltage	0~6kV
Discharge current	0~999μA
Ion Beam dia.	approx. 400μm (FMHW)
Max. milling rate*1	100μm/hr (Si)
Gas flow rate control system	Mass flow controller
Max. sample size	20mm (W) × 12mm (D) × 5mm (H)
Stage traverse	X±10mm Y±5mm
Evacuation system	Turbo Molecular Pump (26L/s) Rotary Pump (135L/min at 50Hz (162L/min at 60Hz))
Dimension	400mm (W) × 600mm (D) × 535mm (H)
Weight	Main unit 45kg+Rotary pump 24kg

* 1. Max.depth in milling with protruded by 100μm from mask edge.

Typical Installation Layout (Unit:mm)



Installation Requirement

Item	Description
Room Temperature	15~30°C
Humidity	70%RH or less
Power source	Single-phase AC100V (±10%) 1.25kVA
Grounding	100Ω or better

Items to be prepared by user

Item	Description
Purity of Ar gas	99.99% or better
Supply pressure of Ar gas	0.03~0.05MPa
Pipe for connecting Ar gas	1/8 inch SUS, Pressure Regulator*2
Gas leak tester	19% or more Oxygen density can be detected.
Recommended table size	800×700mm, withstand load:50kg or more.

*2. Pressure Regulator:Adjustable in a range of 0.03~0.05 MPa.

NOTICE: For proper operation, follow the instruction manual when using the instrument.

Specifications in this catalog are subject to change with/or without notice, as Hitachi High-Technologies Corporation continues to develop the latest technologies and products for our customers.

Hitachi High-Technologies Corporation

Tokyo, Japan
<http://www.hitachi-hitec.com/em/world/>
 24-14 Nishi-Shimbashi 1-chome, Minato-ku, Tokyo, 105-8717, Japan

For further information, please contact your nearest sales representative.